

National Bicycle and Pedestrian Documentation Project

Pedestrian and Bicycle Travel Data in Greater Victoria



2006 ITE District 7 Annual Meeting, Calgary AB,
15-17 May 2006



Pedestrian and Bicycle Travel Data in Greater Victoria



Richard James, P. Eng., PTOE
Richard James & Associates,
Victoria, BC

and

Larry Roberts, A Sc T,
Capital Regional District,
Victoria, BC



Pedestrian and Bicycle Travel Data in Greater Victoria

- Historic travel data collection in the CRD
- ITE's "National Bicycle and Pedestrian Documentation Project" overview
- Integration of CRD objectives with those of the ITE project
- Survey designs (Counts) & (Interview survey)
- Solving operational challenges
- The results
- Continuing time-series analysis of bike/pedestrian data
- Guidelines for further work



Pedestrian and Bicycle Travel Data in Greater Victoria

Background

- Location – South end of Vancouver Island
- Population 354,200
- 610 Vehicles/1000 pop.
- 350 million VKT per year
- Key planning issues include transportation, environment and housing.



Pedestrian and Bicycle Travel Data in Greater Victoria

Historic Data Collection

- 1st collected in 1963, then in 1975;
- Current program started. 1991, expanded 2005;
- Focus to 2005, development of a Transportation Plan;
- Today, the focus is to monitor and evaluate policy outcomes.

Current Program

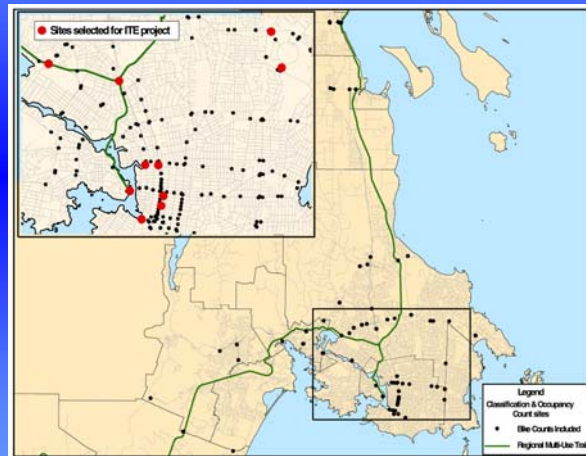
- 5-year cycle including 72-hour and 7-day automatic counts;
- Classification counts; Origin and Destination Surveys; travel time surveys; and other relevant transportation data.
- Annual updates of related demographic data



Pedestrian and Bicycle Travel Data in Greater Victoria

Manual Counts

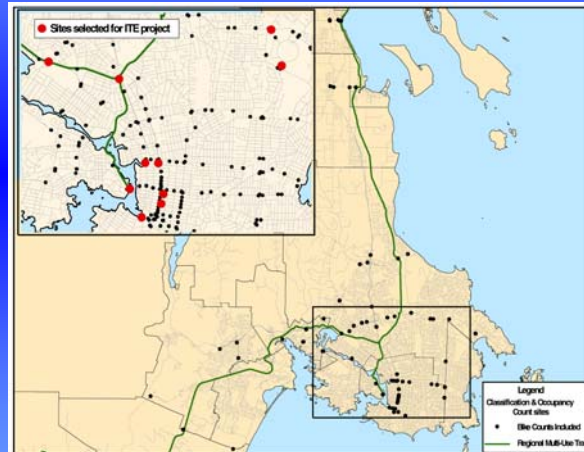
- Occupancy & Classification
- 70 Locations
- 1991 & 2005
- *Excluded Pedestrians*



Pedestrian and Bicycle Travel Data in Greater Victoria

Automatic Counts

- 390 (72-Hour Sites)
- 68 (7-day Sites)
- Since 1991 – 5 to 8 yr cycle
- Since 2004 – 5 yr cycle



Pedestrian and Bicycle Travel Data in Greater Victoria

The National Documentation Project (NDP) is:

- A North America wide bicycle and pedestrian survey project;
- Sponsored by the (ITE) Pedestrian and Bicycle Council.

Pedestrian and Bicycle Travel Data in Greater Victoria

The project intends to:

- Establish “best practices” and a National Database;
- Publicize the material for use by agencies and organizations on-line; and
- Analysis of various factors relevant to bicycle and pedestrian activity.



Pedestrian and Bicycle Travel Data in Greater Victoria

Integration of CRD Objectives & the ITE Project

- Compared historic CRD program to the goals of the ITE project
- Prepared a possible list of sites
- Considered new sites (major generators)
- Assessed resources
- Short-listed list of sites



Pedestrian and Bicycle Travel Data in Greater Victoria

Count Form Design

- Used a modified intersection count form to record:
 - ✓ Directional flows
 - ✓ 5 minute intervals

Standardized Pathway Form

- Enhanced the form
 - ✓ Site layout info
 - ✓ Seasonal options
 - ✓ "Other" – record specifics
 - ✓ Coding format



Pedestrian and Bicycle Travel Data in Greater Victoria

- Changes to the Interview Form
 - ▢ Key Plan
 - ▢ Mode/Location Info

STANDARDIZED PATHWAY SURVEY

Directions: Refer to the Standardized Bicycle and Pedestrian Survey Methodology.

"Excuse me, may I ask you a few questions? I'm working for the CRD as part of a national effort to learn why people walk and bicycle where they do. This will take less than one minute and will be completely confidential."

Mode:
 Bike Ped Other:

in Group:

Direction: E/B W/B N/B S/B

Time Period: **Seq No:**

Name:

Date:

Location:



Pedestrian and Bicycle Travel Data in Greater Victoria

- Changes to the Interview Form
 - Seasonal Info Question Expanded

3. Is this pretty constant for the four seasons of the year?

Yes

**If no, what seasons do you come here?
.....and how often?**

<input type="checkbox"/> Summer	<input type="checkbox"/> Winter
<input type="checkbox"/> 0-5 times	<input type="checkbox"/> 0-5 times
<input type="checkbox"/> 6-10 times	<input type="checkbox"/> 6-10 times
<input type="checkbox"/> 10-20 times	<input type="checkbox"/> 10-20 times
<input type="checkbox"/> Daily	<input type="checkbox"/> Daily
<input type="checkbox"/> Fall	<input type="checkbox"/> Spring
<input type="checkbox"/> 0-5 times	<input type="checkbox"/> 0-5 times
<input type="checkbox"/> 6-10 times	<input type="checkbox"/> 6-10 times
<input type="checkbox"/> 10-20 times	<input type="checkbox"/> 10-20 times
<input type="checkbox"/> Daily	<input type="checkbox"/> Daily



Pedestrian and Bicycle Travel Data in Greater Victoria

Standardized Pathway Form

- Easy input form developed
- ✓ (response recorded)
- Other (details recorded)

The screenshot shows a detailed form with multiple sections for data entry. It includes checkboxes for 'Yes' and 'No' responses, and several sections with multiple-choice options for seasons (Summer, Winter, Fall, Spring) and frequency ranges (0-5 times, 6-10 times, 10-20 times, Daily). There are also sections for 'How often you come here', 'How often you go to the park', and 'How often you use the path to go to work/school'. The form is designed for easy data collection during interviews.



Pedestrian and Bicycle Travel Data in Greater Victoria

Operational Challenges

- Weather (rain, rain & more!)
- Volunteers
- Timing of the January date
- Limited comparative data



Pedestrian and Bicycle Travel Data in Greater Victoria

Operational Challenges

- Complex site layout

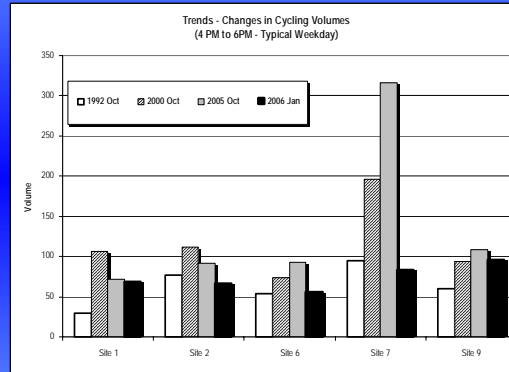


Pedestrian and Bicycle Travel Data in Greater Victoria

Results:

On Street Bike Counts

- Real growth since 1992
- Scenic route more than tripled (92)
- Seasonal changes noticeable on scenic route.
- Modest drop on commuter routes in Jan 2006.

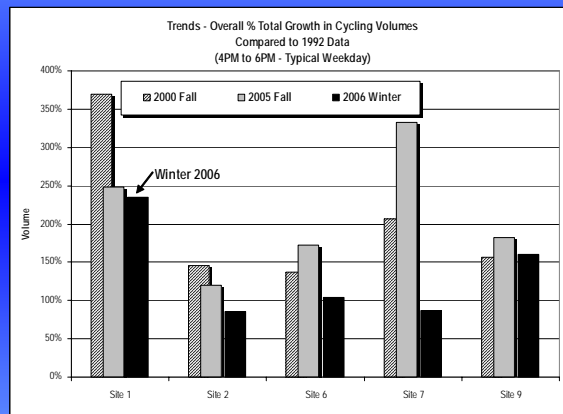


Pedestrian and Bicycle Travel Data in Greater Victoria

Results:

On Street Bike Counts

- Up by 120% to 350%
- Jan 2006 up by 75% to 150%
- Sites 1,2 & 3 have bike lanes
- Site 7 waterfront route
- Site 9 Business core, one way street.

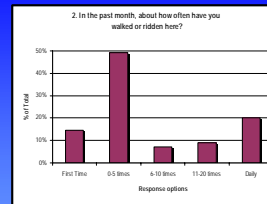
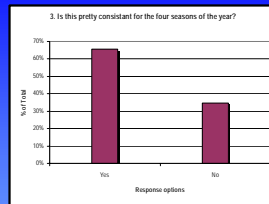
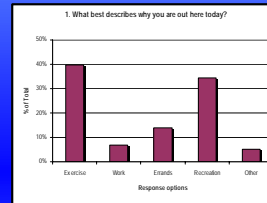


Pedestrian and Bicycle Travel Data in Greater Victoria

Results:

Path Interviews (Q 1, 2, 3)

- Majority exercise/recreation.
- Majority are regular users

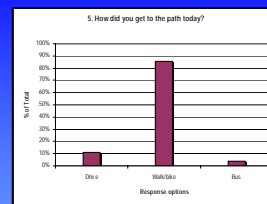
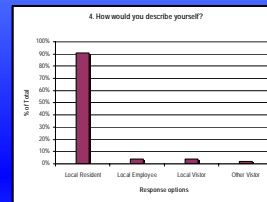


Pedestrian and Bicycle Travel Data in Greater Victoria

Results:

Path Interviews (Q 4 & 5)

- Majority locals
- Majority walked or biked

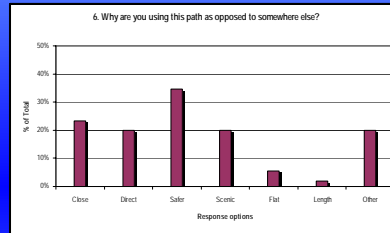


Pedestrian and Bicycle Travel Data in Greater Victoria

Results:

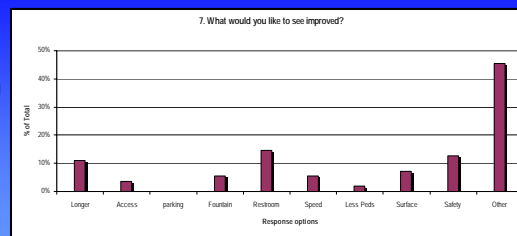
Path Interviews – Quest. 6

- Safety was the primary issue
- Other include engineering & safety issues



Path Interviews – Quest. 7

- Other captured topics such as Mice, lighting and or engineering issues.



Pedestrian and Bicycle Travel Data in Greater Victoria

Conclusions:

- Volunteers were effective
- Count & Survey forms worked
- New seasonal data provides valuable information for existing policies
- Pedestrian data is new and needed
- Provides a basis for monitoring aspects of the TravelChoices Strategy

Pedestrian and Bicycle Travel Data in Greater Victoria

Guidelines for Further Work:

- Reach out to Volunteers earlier;
- Establish more comprehensive safety training of volunteers;
- Expand CRD manual count program to incorporate pedestrian counts in urban areas. (on street & path / 5 year cycle)



Pedestrian and Bicycle Travel Data in Greater Victoria

Questions?

Contact

Richard James, raj@rjassociates.ca
Larry Roberts, lroberts@crd.bc.ca

Credits

Staff Resources: CRD, City of Victoria, CH2MHill, Richard James & Assoc
Signs and Safety Equipment: TransTech Data Services
Photos: Larry Roberts, Richard James, John Luton

